



**BRIDGE TO UNITY**

Bringing communities together

# ACTIVITIES

(ДІЯЛЬНОСТІ)

**Cultural Activity Pack  
#3: Great Britain**



# FACT SHEET

# BRITQUIZ

Great Britain is a captivating island nation in Northwestern Europe. Often referred to as the United Kingdom (UK), it unites four nations: **England, Scotland, Wales, and Northern Ireland.**

Although each nation has their own anthem, **'God Save the King'** is considered the all-inclusive national anthem for Great Britain. **English** is the most common language spoken in all parts of the UK and the **Pound Sterling (£)** is the currency.

Despite its relatively small size, around 93,628 square miles, the UK boasts diverse landscapes, from lush green hills to majestic mountains and stunning coastlines.

Some renowned landmarks are:

**Big Ben and the Houses of Parliament:** Iconic clock tower and political centre of London.

**Stonehenge:** Mysterious ancient monument in Wiltshire, England with standing stones arranged in a circle.

**Edinburgh Castle:** Historic fortress in Scotland's capital.

Great Britain is a cultural melting pot blending traditions from various regions, featuring:

**The Royal Family:** Britain has a constitutional monarchy led by King Charles III.

**Afternoon Tea:** The delightful tradition of socialising whilst enjoying tea with snacks.

**Sports:** Football, cricket, rugby, and tennis are among the most popular sports in the UK.

While primarily Christian, Great Britain embraces a diverse religious landscape:


**Church of England:** The country's largest Christian denomination, led by the Archbishop of Canterbury, with the King as its head.

**Other Religious Communities:** Including Roman Catholics, Methodists, Baptists, Presbyterians, Muslims, Hindus, Sikhs, Jews, and more.

Religious tolerance and respecting individuals' rights to practice their faith and promoting different communities is part of British culture.



TICK THE CORRECT ANSWER BOXES. USE YOUR FACT SHEET TO HELP YOU.

		TRUE	FALSE
1	Great Britain is one country		
2	Stonehenge is located in Wiltshire		
3	King Charles II is the King of England		
4	Great Britain is in Southern Europe		
5	Catholicism is the main religion in the UK		
6	Big Ben is a famous ship in London		
7	Cardiff is the capital of Scotland		
8	English is the UK's most spoken language		
9	The Euro (€) is the official currency of the UK		

**WRITE YOUR ANSWERS IN THE BOXES. USE YOUR FACT SHEET TO HELP YOU.**

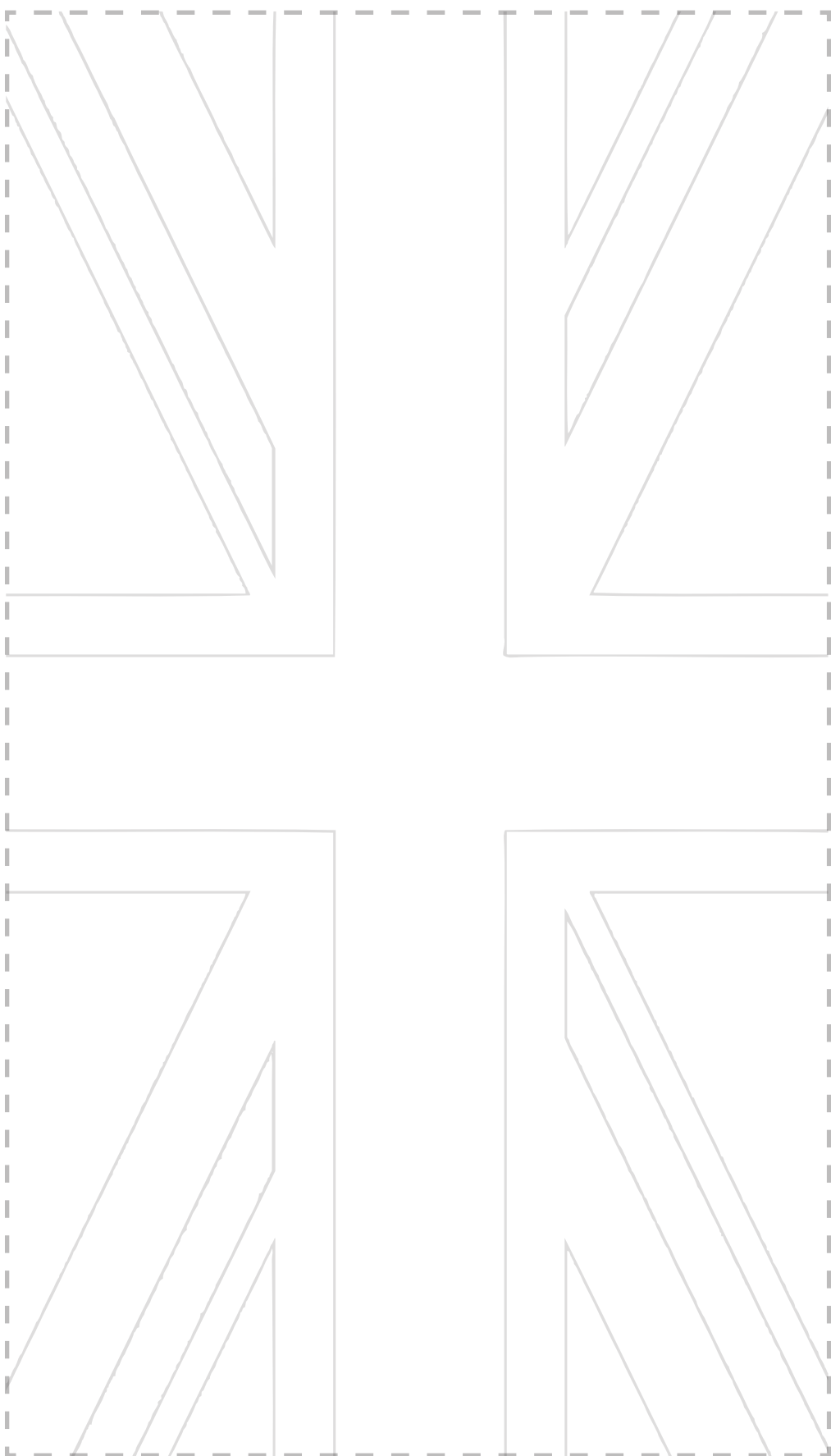
<b>1</b> How big is Great Britain in SQUARE MILES?	
<b>2</b> How many countries make up the UK and can you NAME TWO of them?	
<b>3</b> Where would you find Stonehenge ?	
<b>4</b> What is the name of the CURRENCY used in all of the UK?	
<b>5</b> What type of monarchy does Britain have?	
<b>6</b> What is the CAPITAL CITY of Scotland?	
<b>7</b> What is the NATIONAL ANTHEM most used to represent Great Britain?	
<b>8</b> What is the name of the famous CLOCK TOWER in London?	
<b>9</b> Draw a LONDON BUS:	<b>10</b> Can you think of any more facts about Great Britain?

# THE BRITISH FLAG 'UNION JACK'



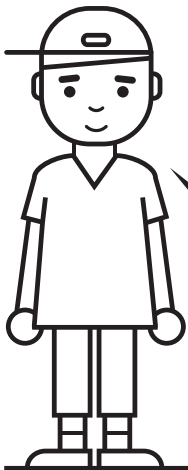
## Британський прапор

Colour in the 'Union Jack' flag then use a pair of scissors to cut it out.  
Розфарбуйте прапор «Юніон Джек», а потім виріжте його за допомогою ножиць.



# HELLO!

## ПРИВІТ!

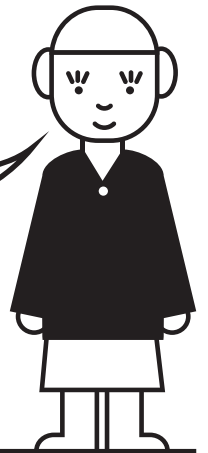


**Hi!**  
**My name is Tom**

*"Привіт!  
Мене звати Том"*

**Привіт,  
приємно  
познайомитись!**

*"Hello,  
nice to meet you"*



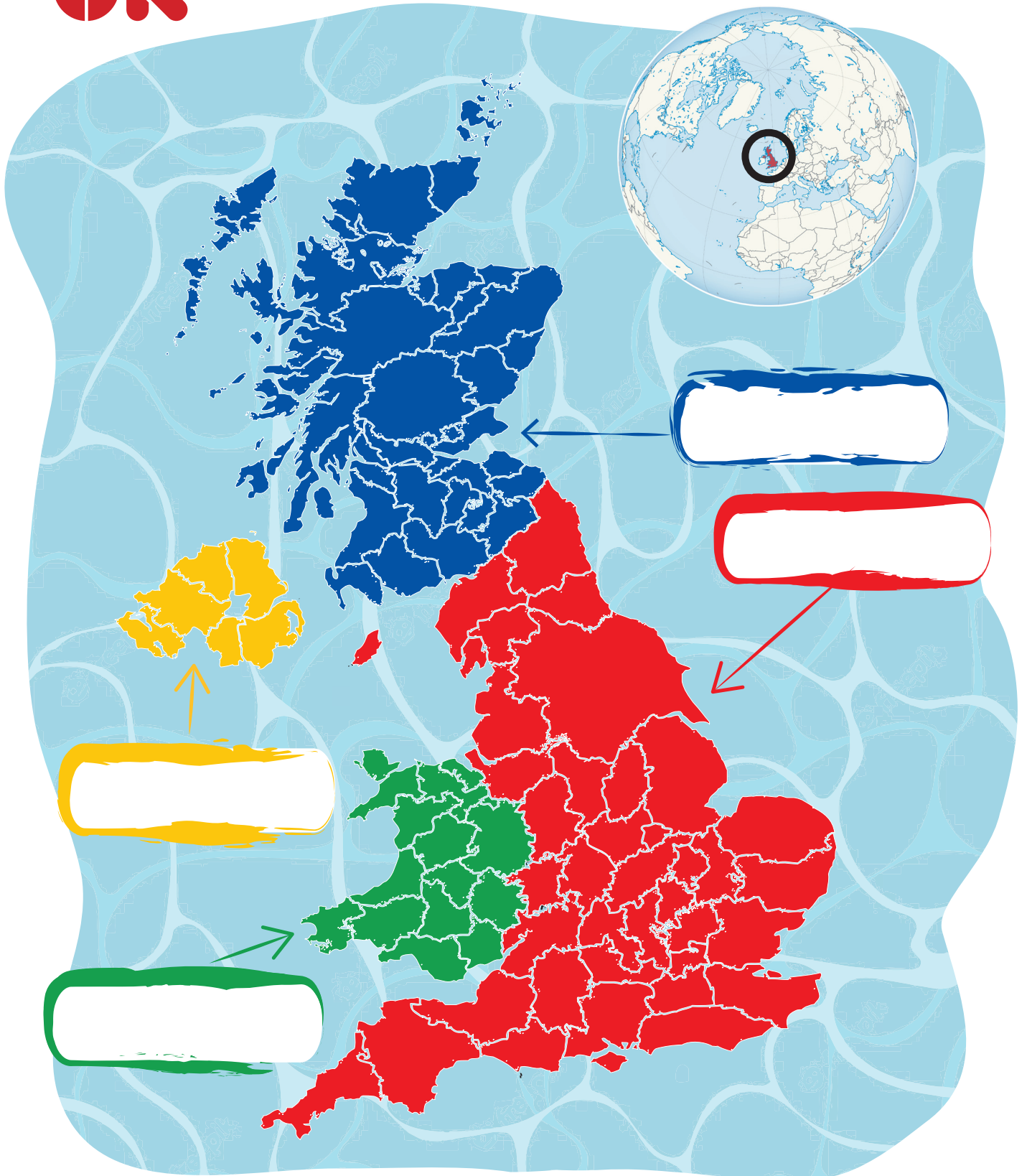
Ukrainian	English	How to say it (phonetics)	
Привіт	Hello	<i>"hel-OH"</i>	<i>/hɛ'loʊ/</i>
Добрий ранок	Good morning	<i>"guud-MOR-ning"</i>	<i>/gʊd 'mɔrnɪŋ/</i>
Як ти?	How are you?	<i>"hau ar yoo"</i>	<i>/hɑʊ ar juː/</i>
Мене звати	My name is...	<i>"migh naym iz"</i>	<i>/maɪ neɪm ɪz/</i>
Так	Yes	<i>"yess"</i>	<i>/jɛs/</i>
Ні	No	<i>"noh"</i>	<i>/noʊ/</i>
Будь ласка	Please	<i>"pleez"</i>	<i>/pliːz/</i>
Дякую	Thank you	<i>"THANK-yoo"</i>	<i>/θæŋk juː/</i>
до побачення	Goodbye	<i>"guud-bigh:"</i>	<i>/gʊd'baɪ/</i>

# MAP OF THE UK

## КАРТА ВЕЛИКОБРИТАНІЇ

The United Kingdom is an island nation consisting of four countries.

Write the names of each country in the United Kingdom in the correct boxes.





# ДЕ ВЕЛИКОБРИТАНІЯ?

Україна (Ukraine)

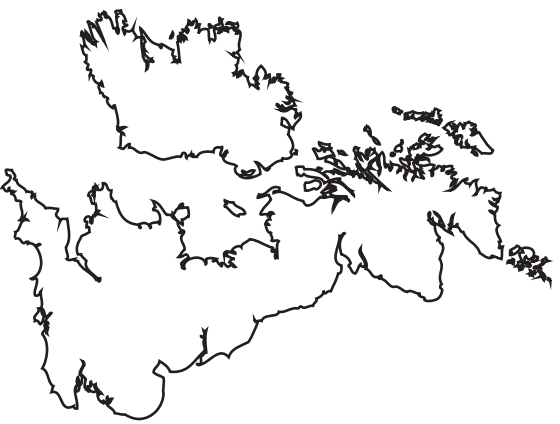
1. Draw a line between London in Great Britain and Kyiv in Ukraine



2. How many people do you think live in Great Britain?

3. What is the distance between London and Kyiv (in miles)?

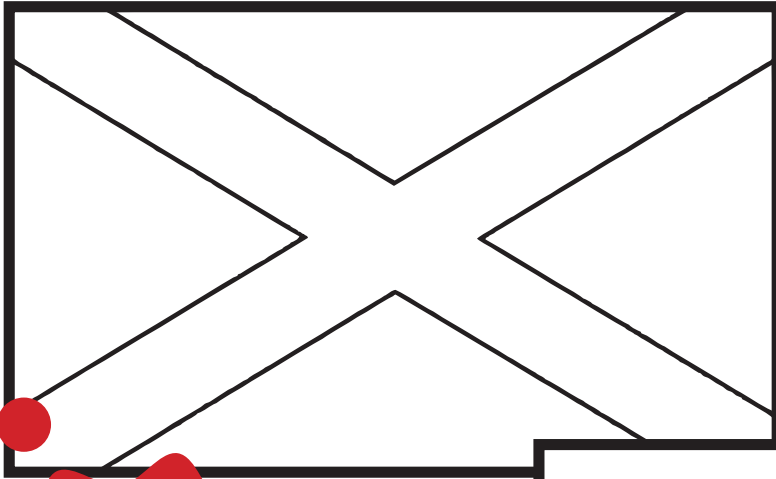
4. How many people do you think live in London?



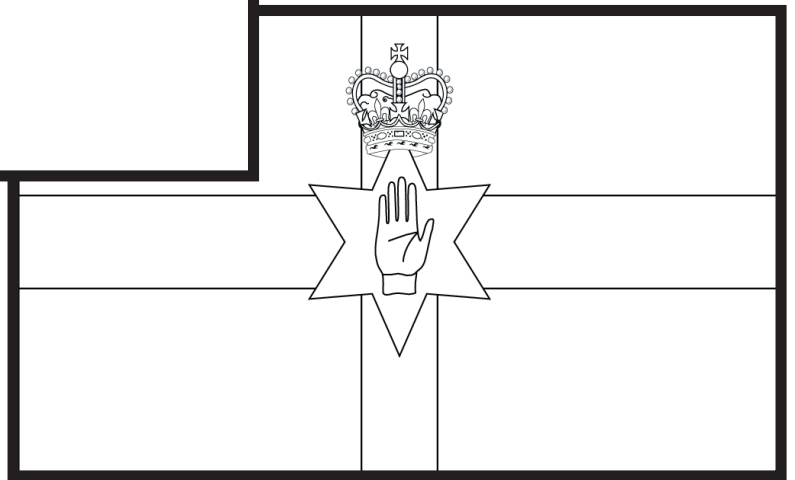
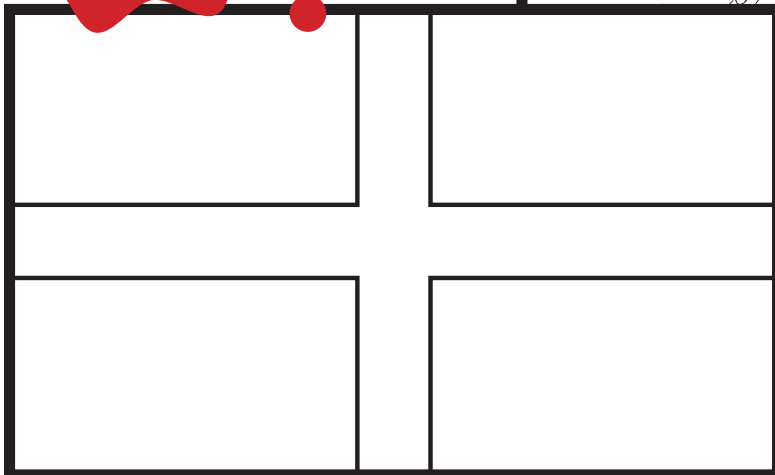
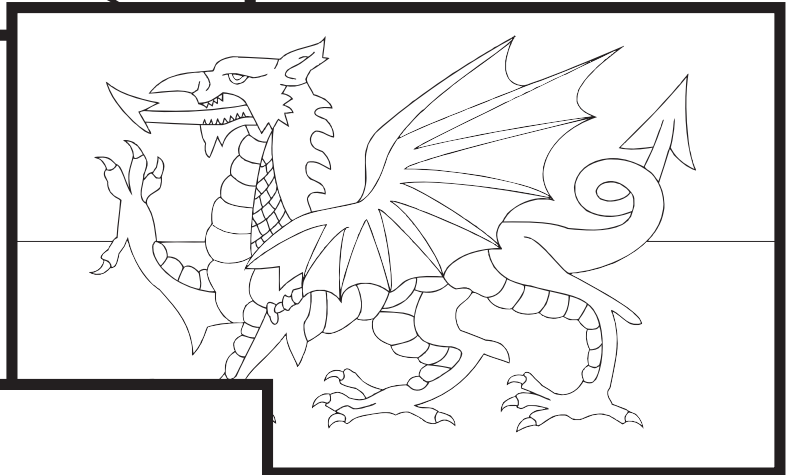
Об'єднане Королівство (UK)



# FLAGS OF THE UK



**COLOUR  
ME IN!**



## ПРАПОРИ UK

England  
Scotland  
Wales

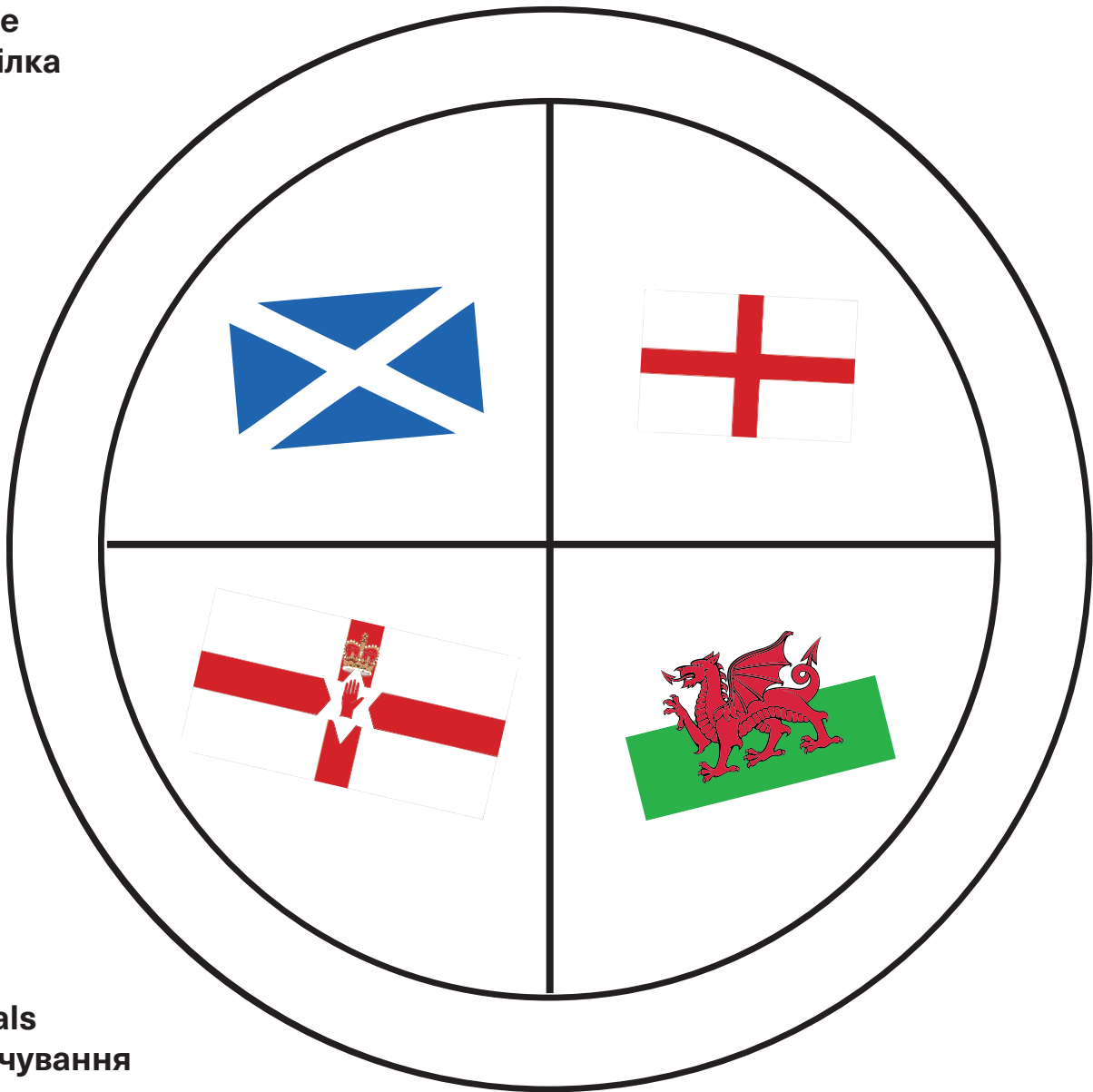
Northern Ireland

Англія ●  
Шотландія ●  
Уельс ●●  
Північна Ірландія ●●

**РОЗФАРБУЙТЕ  
ПРАПОРИ!**

# A TASTE OF BRITAIN

## Plate Тарілка

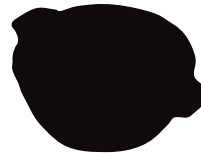


## Meals Харчування



### Fish & Chips

A piece of white fish, usually cod, deep fried in batter and served with chips.



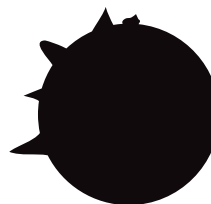
### Cawl

Cawl is a hearty Welsh stew made of meat and any vegetables available.



### Haggis with 'neeps & tatties'

Savoury mince of sheep's offal with onion, oatmeal, suet, spices, and salt, mixed with stock. Served with mashed swede (neeps) and potatoes (tatties). A Scottish favourite!



### Ulster Fry

Similar to a traditional 'Full English Breakfast', the Ulster Fry is a plate of sausages, streaky bacon, eggs and tomatoes served with griddle-baked soda farls (quarters) and fried potato bread.



## INSTRUCTIONS

**Carefully** cut out the different **MEALS** on this sheet – ask an adult to help you.  
Put each meal in the right place on the **PLATE**.

Tip: Use the shapes, photos and other clues to help you!

## QUESTIONS

1. Which meal contains mashed swede?

2. Which meal is deep fried?

3. What animal is used to make Haggis?

4. What fish is usually used in Fish & Chips?

## BONUS QUESTION

5. What is the Scottish name for swede and potatoes?

# FACT SHEET

## COINS OF THE UK

### United Kingdom (UK)

**Pound Sterling  
GBP**



The currency of the UK is called the Pound Sterling.

A 1 Pound coin has 12 sides with a silver centre and a gold border.

### Ukraine

**Hryvnia  
UAH**



The currency of Ukraine is called the Hryvnia.

A 1 Hryvnia coin is silver and is circular.

### UK Coins

**1p**



**2p**



**5p**



**10p**



**20p**



**50p**



**£1**



**£2**



### Value

In the UK:

**£1 = 100 pennies**

In Ukraine:

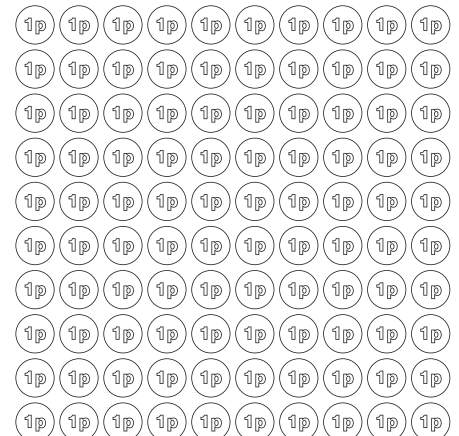
**₴1 = 100 kopyka**

In 2022:

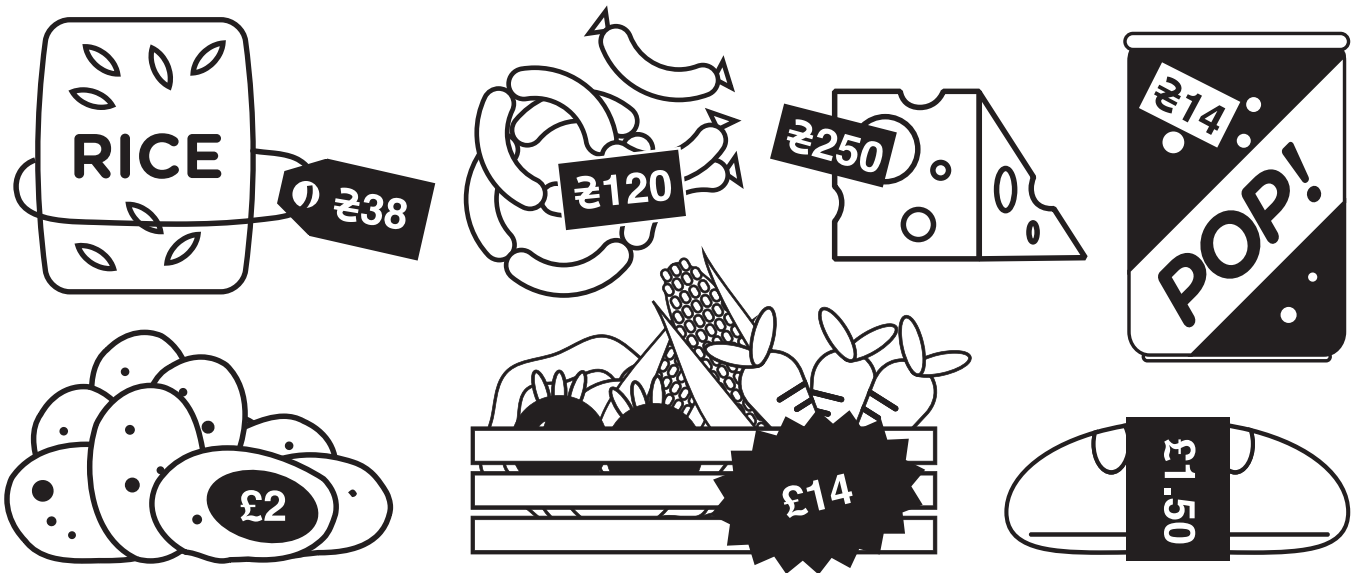
**£1 = ₴38**



=



Use your **fact sheet** and a calculator to help you.  
**Write your answers below.**



- 1 How much would a bag of rice cost in pounds (£) ?

---
- 2 How much would the basket of vegetables cost in hryvnia (₺) ?

---
- 3 How many hryvnia (₺) would you need to buy the potatoes?

---
- 4 How many ₺5 hryvnia coins would you need to buy the sausages?

---
- 5 How many kopyyka would you need to buy the fizzy drink?

---
- 6 How many hryvnia (₺) would you need to buy the bread?

---
- 7 How many hryvnia (₺) would you need to buy all of the items?

---

# UK COINS

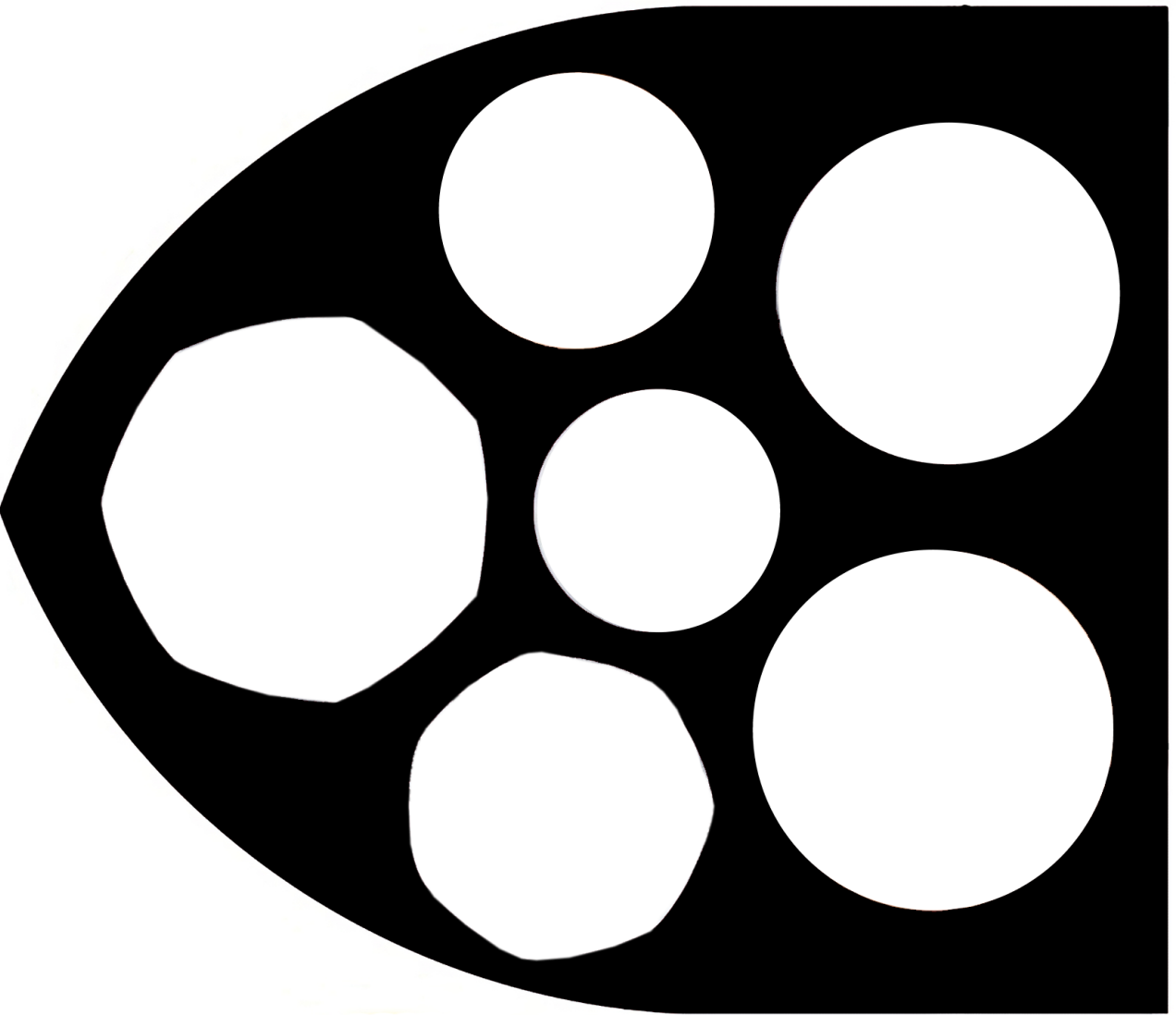


Carefully cut out the different **COINS** on this sheet – ask an adult to help you.  
Put each coin in the right place on the **SHIELD**.



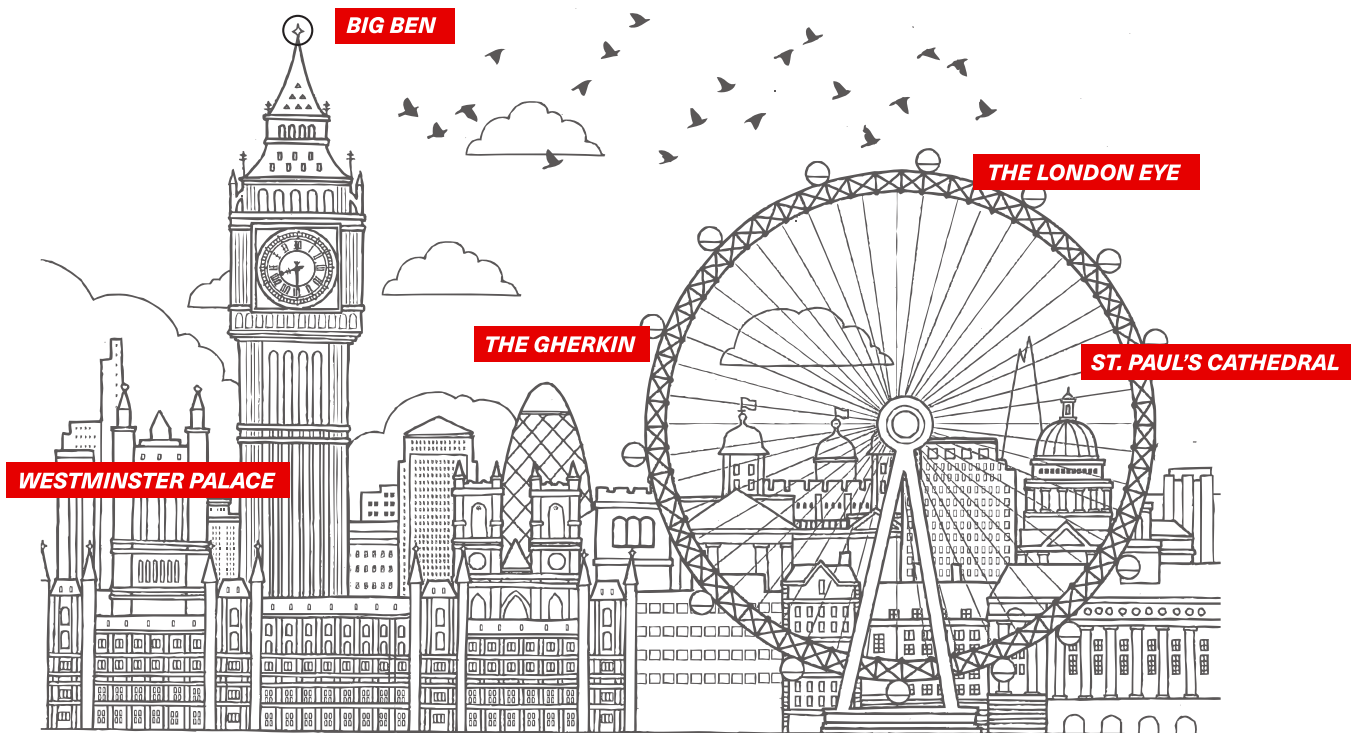
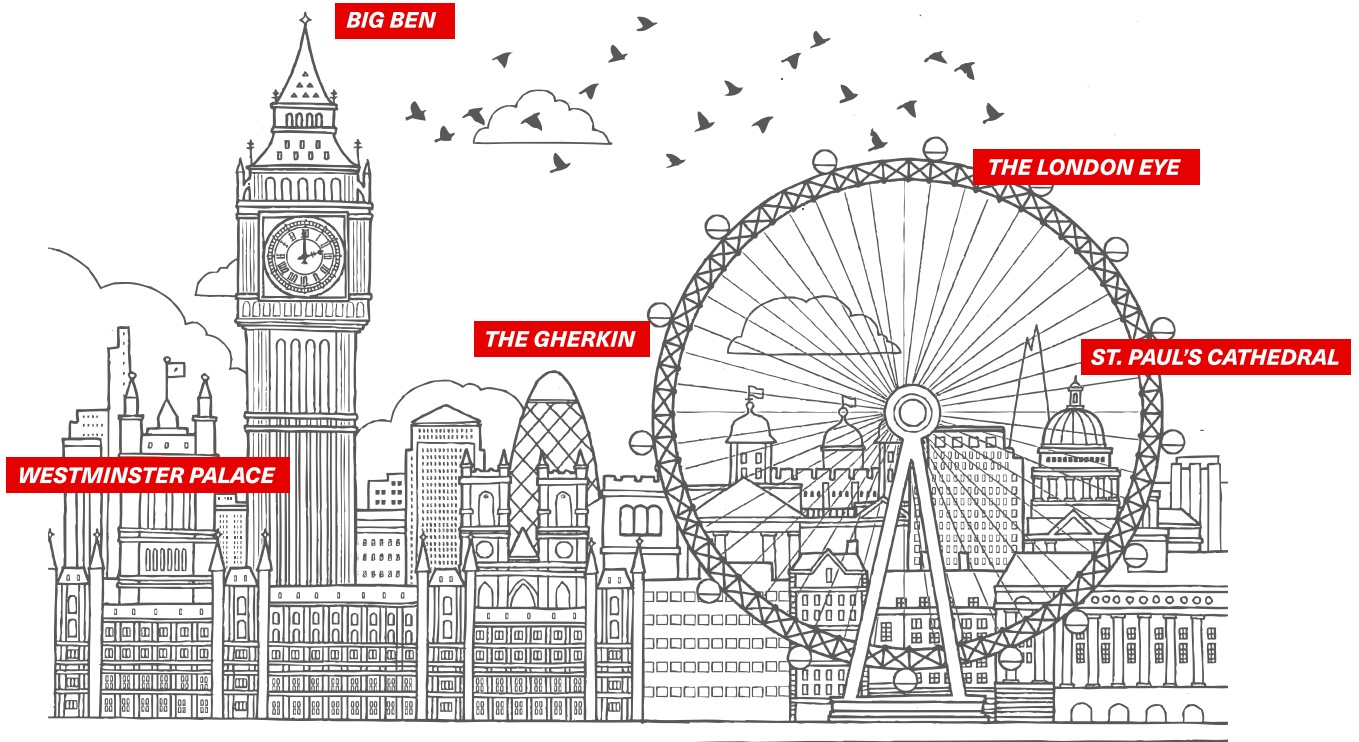
Each of the latest UK **COINS** contains a small piece of a larger picture.

Use your cut-out coins to recreate the full **ROYAL SHIELD OF ARMS.**



# SPOT THE DIFFERENCE

Can you spot the **8 differences** between these pictures of some of London's famous landmarks? Circle your answers:

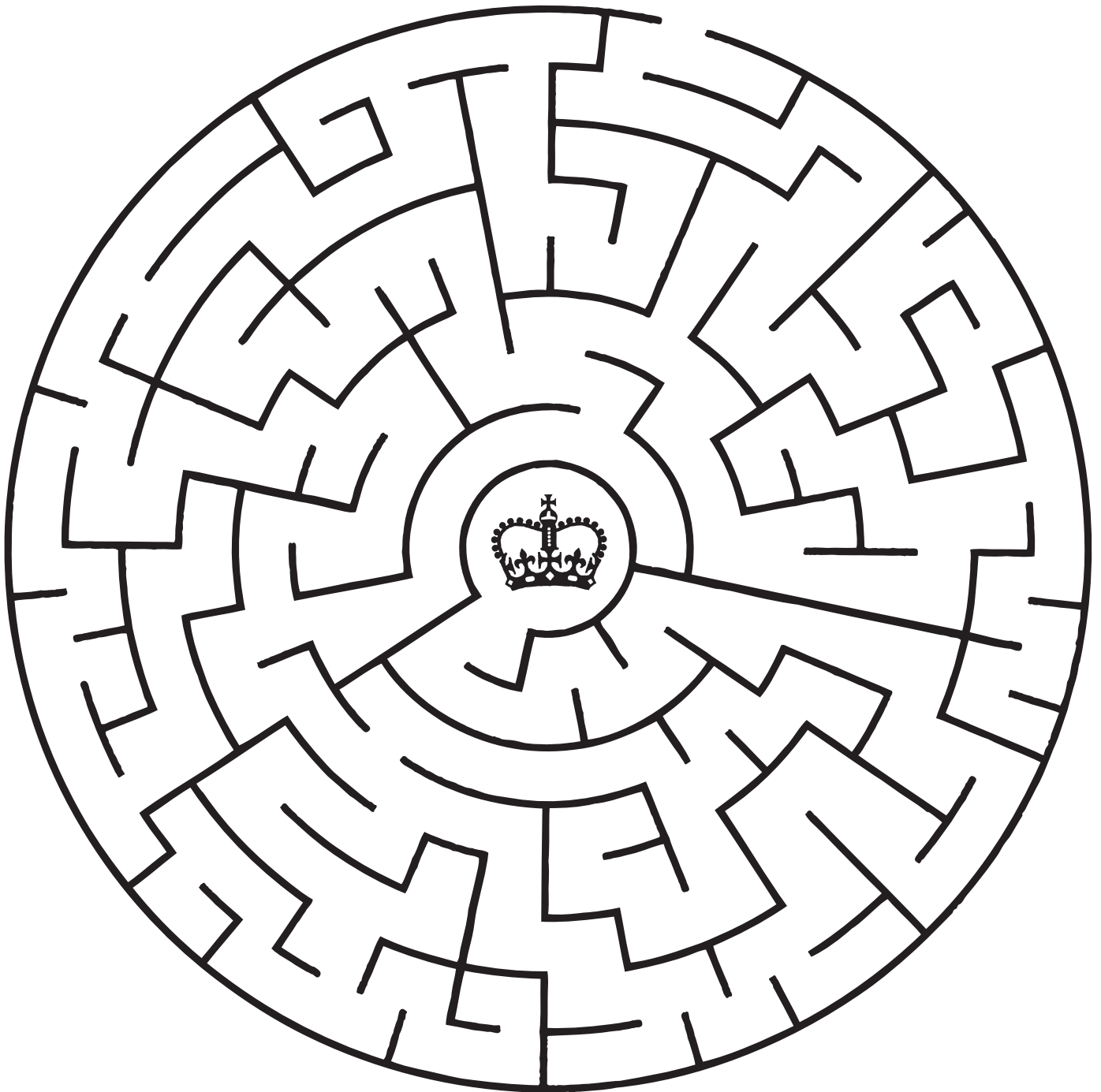
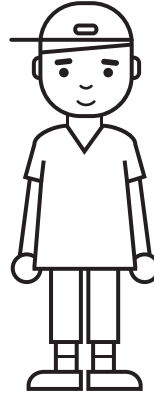




# SPOT THE DIFFERENCE

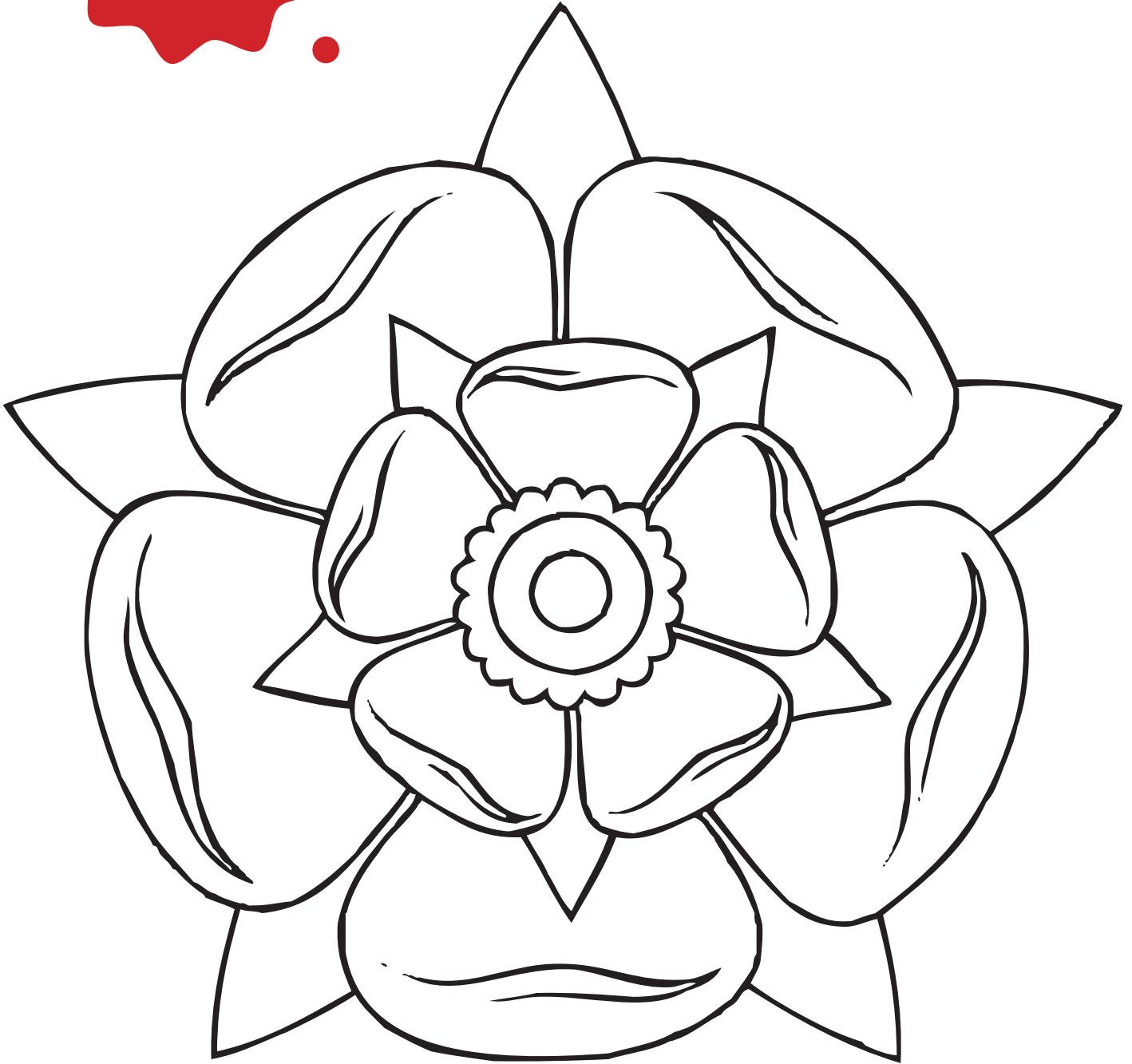
Can you spot the **8 differences** between these pictures of **Tower Bridge**?  
Circle your answers:





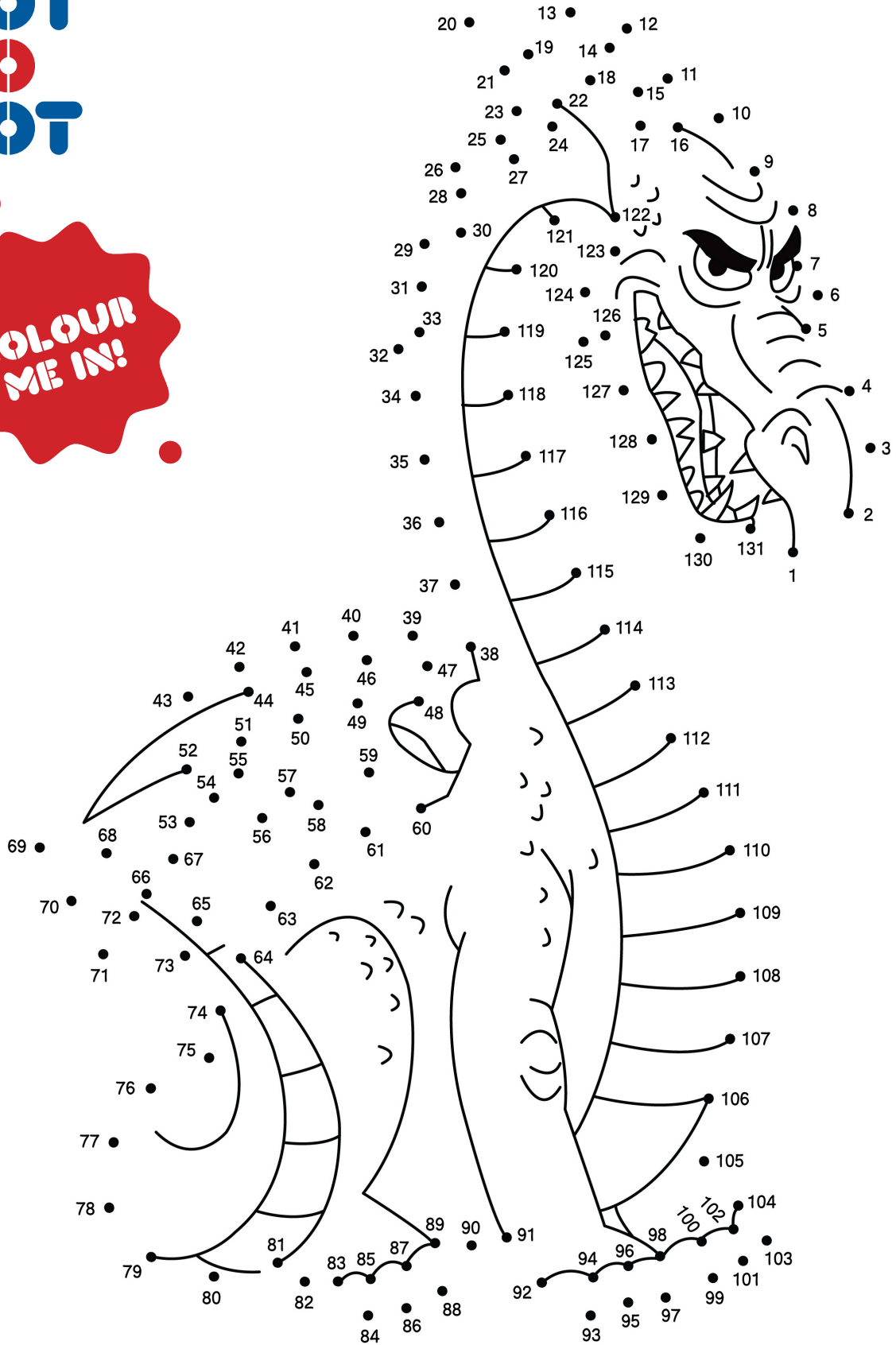
# TUDOR ROSE

COLOUR  
ME IN!



**The Tudor Rose** is the traditional floral emblem of England.





**RED DRAGON**

**The Welsh Dragon, 'y Ddraig Goch',** meaning 'the red dragon' is a heraldic symbol that appears on the national flag of Wales.

Stonehenge is a famous \_\_\_\_\_ monument in Wiltshire, Southern England. It was one of the first sites in the UK to be designated as a UNESCO World Heritage Site.



Stonehenge is a masterpiece of \_\_\_\_\_, constructed in stages between 5,000 and 3,500 BC using only simple tools and technologies, before the advent of metals and the invention of the wheel.

Building the stone circle would have required hundreds of people to transport, shape, and erect the stones. In 2021, \_\_\_\_\_ uncovered evidence suggesting that the ' \_\_\_\_\_ ' may have been transported all the way from Wales using logs and ropes!

The ancient people who built this mysterious monument would have needed others to provide them with food, take care of their children, and supply tools like

hammerstones, \_\_\_\_\_, antler picks, and timber. The entire project would have demanded careful planning and a lot of team work.

One of the most interesting aspects of Stonehenge is its resemblance to a giant \_\_\_\_\_. When the sun rises in specific spots during the year, it aligns with the stones. This alignment might have helped the people who built it to determine important events, such as planting crops or celebrating special days.

The purpose of Stonehenge remains unknown to us. Many believe that there must have been an important spiritual reason why \_\_\_\_\_ and \_\_\_\_\_ people invested so much effort into its \_\_\_\_\_.

More than 800,000 people visit this wonder of the world every year. It is a \_\_\_\_\_ site, a source of inspiration, and a reminder of the ingenuity and creativity of people, even in times when they didn't possess all the sophisticated things we have today!

## WORD BANK

Put these **missing words** in the **right places**.

**archaeologists**  
**Bronze Age**  
**calendar**  
**construction**  
**engineering**

**Neolithic**  
**prehistoric**  
**ropes**  
**spiritual**  
**standing stones**

# WORDSEARCH

B	H	T	N	E	M	A	I	L	R	A	P	M	Z	P
Q	R	S	J	D	O	L	L	S	W	Q	J	B	U	F
I	X	I	I	X	N	P	K	E	M	D	D	H	F	E
N	V	R	T	L	H	M	A	M	V	N	T	I	F	Y
Q	K	U	J	A	G	R	M	A	H	U	D	I	N	E
M	J	X	Z	Q	I	N	C	H	D	R	X	Y	R	E
I	S	L	A	N	D	N	E	T	A	N	E	A	M	D
X	I	C	Y	F	I	K	M	C	E	H	E	O	G	I
E	G	N	E	H	E	N	O	T	S	P	N	T	J	N
G	W	U	I	I	V	W	M	U	S	A	P	S	R	B
A	K	L	J	P	V	N	B	E	R	N	I	A	J	U
J	F	W	I	P	O	L	K	C	M	U	K	F	U	R
P	O	Y	S	V	V	A	H	N	W	M	C	L	H	G
B	I	R	C	N	H	Y	W	G	B	M	B	E	M	H
X	Z	B	G	S	L	O	N	D	O	N	F	B	R	H

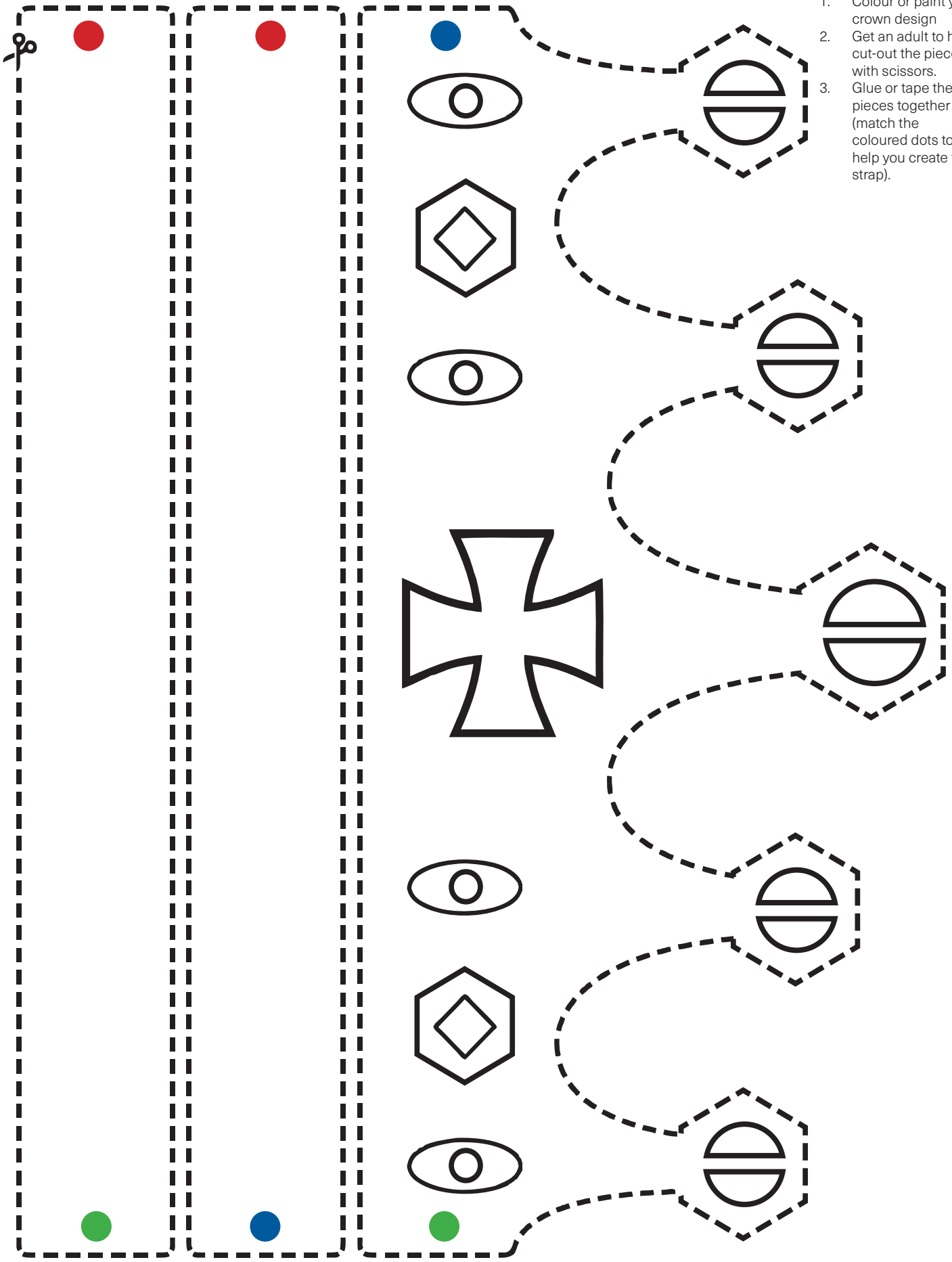
## Find these words!

Words can go in any direction and share letters as they cross over each other.

**Belfast** **Britain** **Cardiff** **Edinburgh** **English** **Island**

**London** **Monarchy** **Parliament** **Shakespeare**

**Stonehenge** **Thames**



**Instructions**

1. Colour or paint your crown design
2. Get an adult to help cut-out the pieces with scissors.
3. Glue or tape the pieces together (match the coloured dots to help you create the strap).